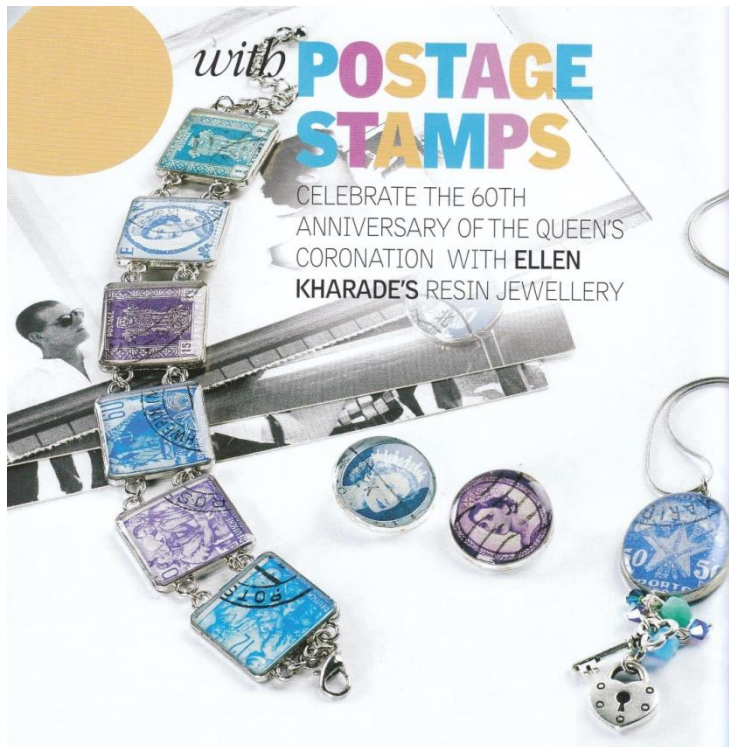


# Postage Stamp Jewellery Project



Use vintage postage stamps to create beautiful commemorative jewellery.

By Ellen Kharade

*Ellen is a general craft designer who regularly contributes articles to Make & Sell Jewellery magazine as well as several of its sister titles.*

## TOOLS AND MATERIALS

- ✓ Postage Stamps
- ✓ Bezels
- ✓ Jump Rings
- ✓ Trigger Clasp
- ✓ Heart Lock,
- ✓ Key Charm
- ✓ SWAROVSKI ELEMENTS crystals
- ✓ Head pins
- ✓ Snake Chain
- ✓ PVA Glue
- ✓ Paintbrushes
- ✓ Water based sealer
- ✓ Newspaper
- ✓ ARRETIL skin protection cream
- ✓ Mixing Cups
- ✓ Digital Scales (0.5 to 500g)
- ✓ CHEMSET Doming Resin & Hardener
- ✓ Mixing Sticks
- ✓ Heat Gun
- ✓ Large Bowl
- ✓ Scalpel
- ✓ Round-nosed pliers
- ✓ Flat-nosed pliers

## INSTRUCTIONS FOR BRACELET



- STEP 1 Choose sufficient co-ordinating postage stamps for the number of bezels you will be using on your bracelet. Trim each stamp so it fits comfortably within the frame of the bezel.
- STEP 2 Apply PVA glue to the back of each stamp and stick one into each bezel. Use a clean paintbrush to push the stamps into the corners otherwise the resin will seep underneath the stamp and spoil the effect. Once each stamp is in place, leave for an hour to fully set.
- STEP 3 Using a paintbrush coat the surface of each stamp and the sides of the bezel with sealer. Give each stamp at least three coats and leave to dry for at least two hours.
- STEP 4 Cover your work area with newspaper and lay the bezels out on it. Apply Arretil to your hands to protect them. Place a mixing cup on the scales and zero them. Pour 20g of resin into the cup and then add 10g of hardener. Stir carefully but thoroughly with a mixing stick and leave to stand for 15 minutes to thicken slightly.
- STEP 5 Pour resin into the first bezel until it's nicely rounded on top. Take care not to overfill. Fill the remaining bezels in the same manner.
- STEP 6 Waft a heat gun over each of the bezels to disperse any air bubbles and then cover with a bowl and leave to dry in a warm place (minimum temperature 18°C) overnight.
- STEP 7 Next day, join the bezels together using jump rings, then make a short chain of jump rings for each end of the bracelet and attach a trigger clasp to the loose end of one length of chain.

## INSTRUCTIONS FOR PENDANT



- STEP 1 Choose a postage stamp that's larger than your bezel. Place the bezel on top of the stamp and draw round it. Cut around the outline then check to make sure the stamp fits comfortably inside the frame of the bezel.
- STEP 2 Apply PVA glue to the back of the stamp and stick it into the bezel. Use a clean paintbrush to push the stamp into the edges otherwise the resin will seep underneath the stamp and spoil the effect. Leave for an hour to fully set.
- STEP 3 Using a paintbrush coat the surface of the stamp and the sides of the bezel with sealer. Give the stamp at least three coats and leave to dry for at least two hours.
- STEP 4 Cover your work area with newspaper and lay the bezel on it. Make sure the bezel is lying flat and level. Apply Arretil to your hands to protect them. Place a mixing cup on the scales and zero them. Pour 4g of resin into the cup and then add 2g of hardener. Stir carefully but thoroughly with a mixing stick and leave to stand for 15 minutes to thicken slightly.
- STEP 5 Pour resin into the first bezel until it's nicely rounded on top. Take care not to overfill.
- STEP 6 Waft a heat gun over the bezel to disperse any air bubbles and then cover with a bowl and leave to dry in a warm place (minimum temperature 18°C) overnight.
- STEP 7 Next day, attach the heart lock and key charm to a three jump ring chain. Thread Swarovski Elements crystals onto head pins, turn into wrapped loops and attach just above the charms. Fix the decorative cluster to the end of the bezel using another jump ring, then thread the pendant onto the snake chain.